



HORSHAM

GATES

Gate *3* Extension





TRADITIONAL LIVING THE MODERN WAY

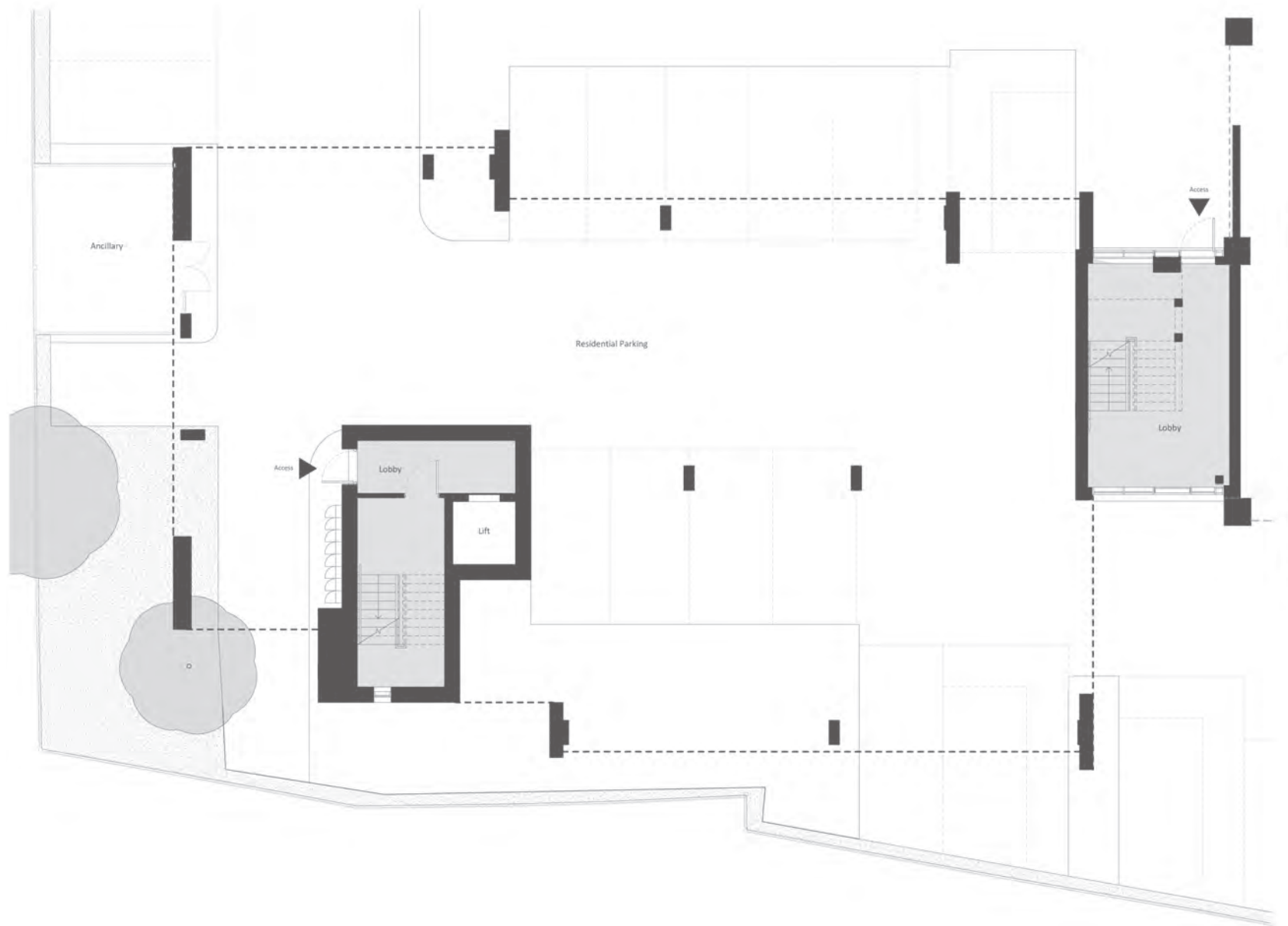
The Horsham Gates, Gate 3 Extension is a collection of contemporary 1 & 2 bedroom, new-build apartments, finished to a high quality specification. It's only a four-minute walk from Horsham railway station, where you'll find connections to London Victoria that take just 54 minutes.

Horsham itself is a beautiful, historic market town that comfortably blends a great deal of character with a vibrant, modern feel. The town centre is filled with high street retailers as well as bars, cafés and restaurants.

The images featured here are rendered to give an impression of the design only and are subject to change without notice.



LOWER GROUND FLOOR



Unit layouts and specifications are subject to change without notice.

GROUND FLOOR

NOTE:
ALL DIMENSIONS INDICATED ON THIS PLAN
ARE FOR GUIDANCE ONLY THE EXACT
MEASUREMENTS WILL BE CHECKED ON SITE
AFTER CONSTRUCTION OF ALL PARTITIONS



Unit layouts and specifications are subject to change without notice.

The images featured here are rendered to give an impression of the design only and are subject to change without notice.

FIRST FLOOR



Unit layouts and specifications are subject to change without notice.

SECOND FLOOR



Unit layouts and specifications are subject to change without notice.

The images featured here are rendered to give an impression of the design only and are subject to change without notice.

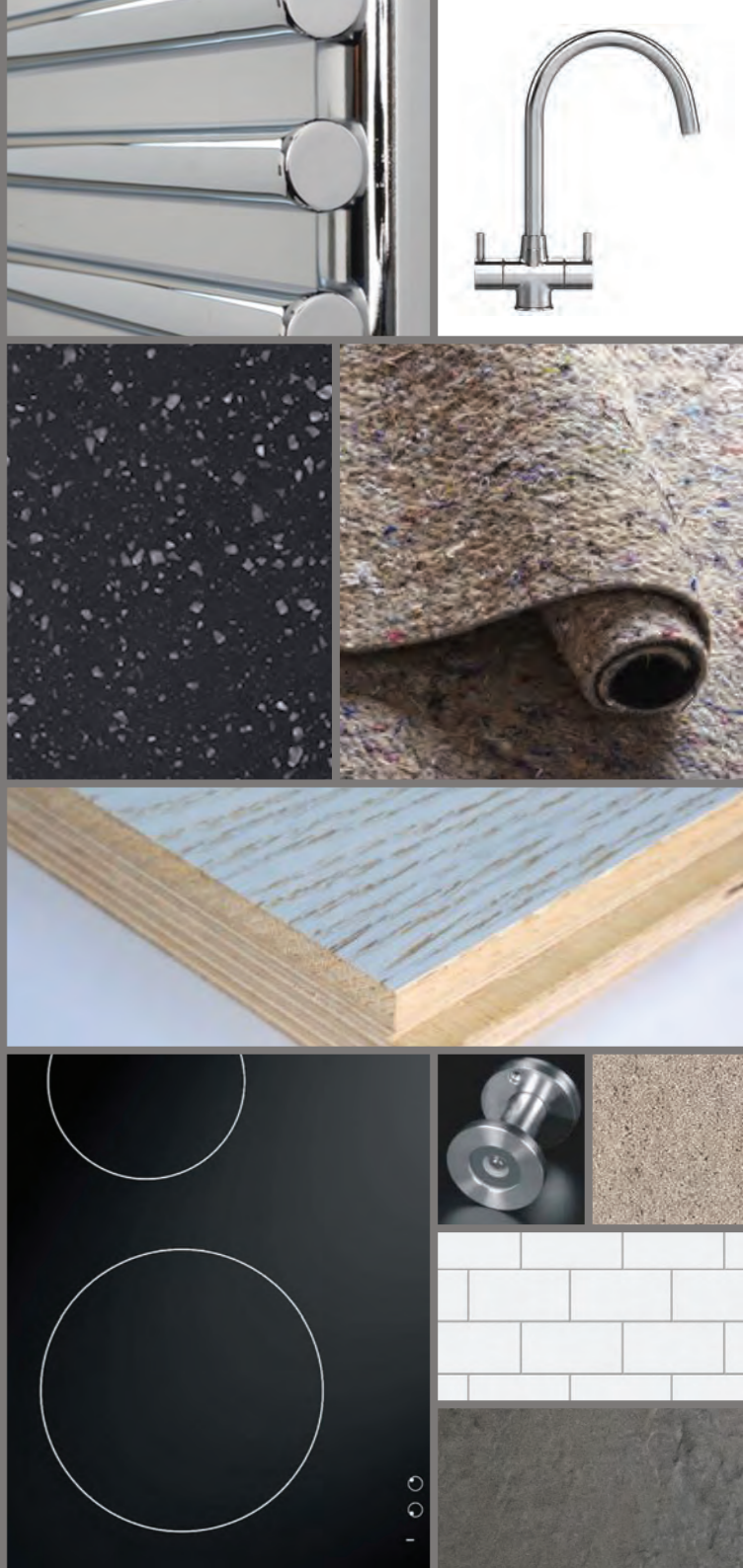


HORSHAM
GATES



DISCLAIMER

This brochure and the information contained in it does not form part of any contract, and while reasonable effort has been made to ensure accuracy, this cannot be guaranteed and no representation or warranty is made in that regard. Apartment designs and layouts are indicative only and may change. The specification of the apartments is the anticipated specification as at the date this brochure was prepared, but may be subject to change in accordance with permitted variances under the apartment sale contracts. Dimensions shown in any text or plan are approximate sizes and indicative only and actual sizes may be different once constructed. Computer generated images and photos are indicative only. All sales remain subject to contract. All information regarding prospective commercial or retail tenants represents current intention only, and the final identity of the tenants may change. Furniture shown in Computer Generated Images and photos is not included in sales. Horsham Gates is a marketing name only and will not necessarily form part of the approved postal address. Neither the agents nor any person in their employment has any authority to make or give any representation warranty or guarantee (whether written or oral) in respect of or in relation to the development (or any parts thereof).





TITAN PROPERTY DEVELOPMENTS

Titan Property Developments is leading the way in creating high quality, modern living spaces exclusively designed for today's busy professional. Our properties are conveniently located close to major transportation hubs, providing homes that offer all the benefits of modern urban living.

Using the latest design platforms, we are able to offer high-specification modern homes at competitive prices. Our interiors are sleek and sophisticated and reflect the aspirations of our residents.

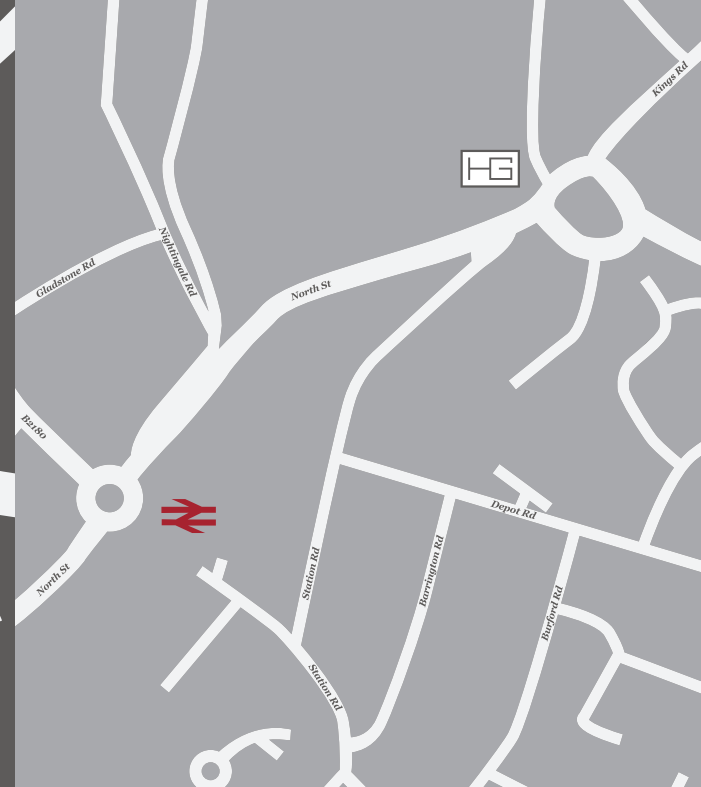
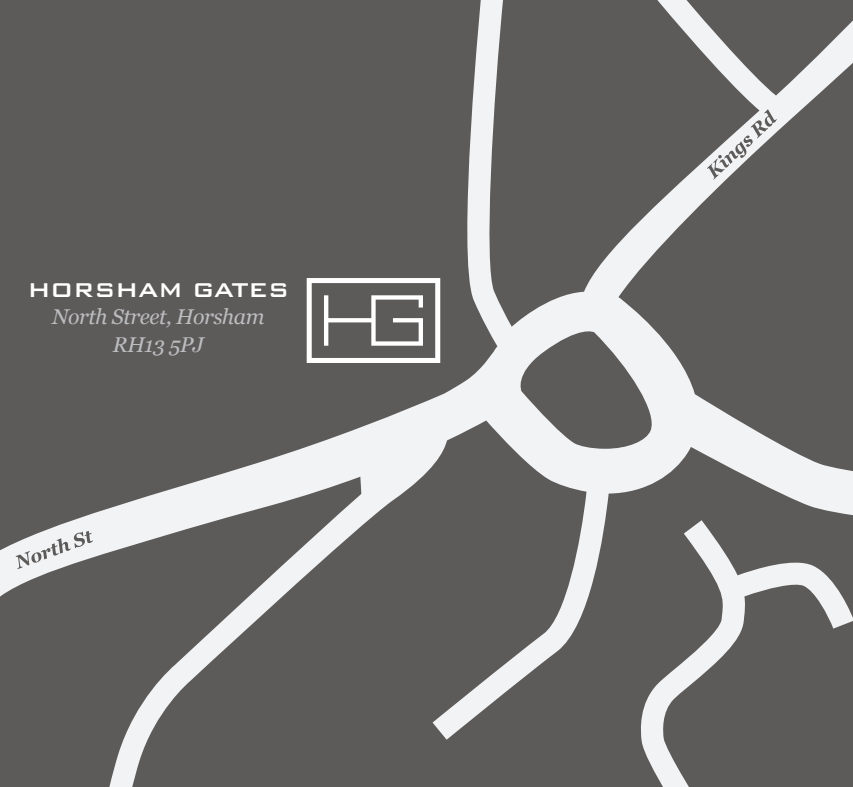


MODERN LIVING AT AFFORDABLE PRICES

The images featured here are rendered to give an impression of the design only and are subject to change without notice.



HORSHAM GATES
North Street, Horsham
RH13 5PJ



Horsham is located approximately 30 miles south of London and is situated within both the Gatwick Diamond and the Coast to Capital Local Enterprise Partnership. Only 15 miles from Gatwick Airport, Horsham also links directly to the M25, via the A24. In lifestyle surveys, Horsham consistently ranks high across many key indicators, including quality of life, education, health, low unemployment, housing market and low crime levels.

Now taking reservations, please call

01403 269 268

horsham@cubittandwest.co.uk



HORSHAM-GATES.CO.UK

MODERN LIVING AT AFFORDABLE PRICES

cubitt & west
Land & New Homes